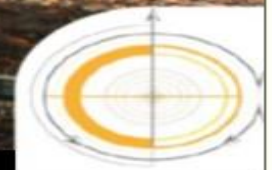


IMPROVING THE CUSTOMER TRAIN TRAVEL EXPERIENCE

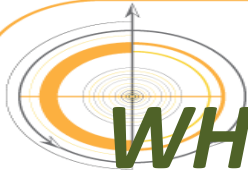
Transport for Melbourne

T R A I N S

Friday August 9 - 2019



RAIL FUTURES
INSTITUTE INC.



WHAT IS RAIL FUTURES INSTITUTE ?

The Rail Futures Institute (RFI) is an independent non-partisan group.

RFI was formed in 2013 to advocate cost-effective rail and intermodal solutions for public transport and freight problems based on sound commercial, economic and social reasoning.

Rail Futures members include experienced rail professionals, urban planners, engineers and economists.

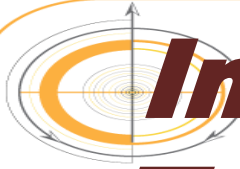
Train Patronage Trend

METRO RAIL NETWORK PATRONAGE 2012/13 to 2017/18.



Source : PTV Annual Reports

Train patronage has increased by 6.8 % over the 5 year period to 30/06/2018

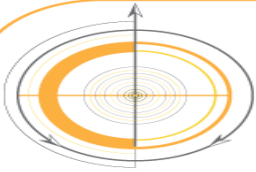


Improving the Customer Train Travel Experience :

- ***Improving service reliability***
- ***Improving passenger communication***
- ***Improving service frequency***
- ***Improving service capacity***
- ***Improving passenger interchange***

MAJOR INFRASTRUCTURE STILL TO COME:

- ***Melbourne Airport Rail Link***
- ***Untangling the CITY LOOP***
- ***Extending rail network coverage***
- ***MM 2 cross-city mass transit***



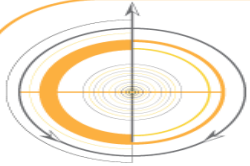
Improving Service Reliability

Duplication 5 single line sections

1. Dandenong – Cranbourne
2. Gowrie – Upfield
3. Greensborough – Eltham
4. Mooroolbark – Lilydale
5. Ferntree Gully - Upper Ferntree Gully

Five Priority Grade Separations

- Fitzgerald Rd, Station Rd, Robinsons Rd – DEER PARK
- Glenhuntly Road – GLENHUNTLY (Tramway Square)
- Glenferrie Road - KOOYONG (Tramway Square)



MELBOURNE - 2019

Mixing Trams, Trains and Cars
3 of these antique crossings still exist !



Glenhuntly Rd, Glenhuntly – three train tracks / two tram tracks level crossing



Improving Service Reliability

Introduce an overall Train/Tram/Bus Operations Control Centre

- **to ensure smooth co-ordinated service operation**
- **oversee timetabled train/bus connections in accordance with agreed protocols**
- **ensure accurate and updated passenger communication especially in times of service disruption**



Improving Service Frequency

- * **10 min frequency inter-peak and weekends to Werribee, Craigieburn, Watergardens, Mernda & Macleod** (*existing 10 mins to Newport, Dandenong, Frankston, Clifton Hill and Blackburn*)
- * **20 min frequency inter-peak and weekends to Sunbury**
- * **20 min evening frequency to Craigieburn, Mernda, Eltham and Sunbury**
- * **Caulfield Loop – run anti-clockwise all day - 7 days**
- * **Standard Timetables - Saturdays / Sundays / Public Holidays**



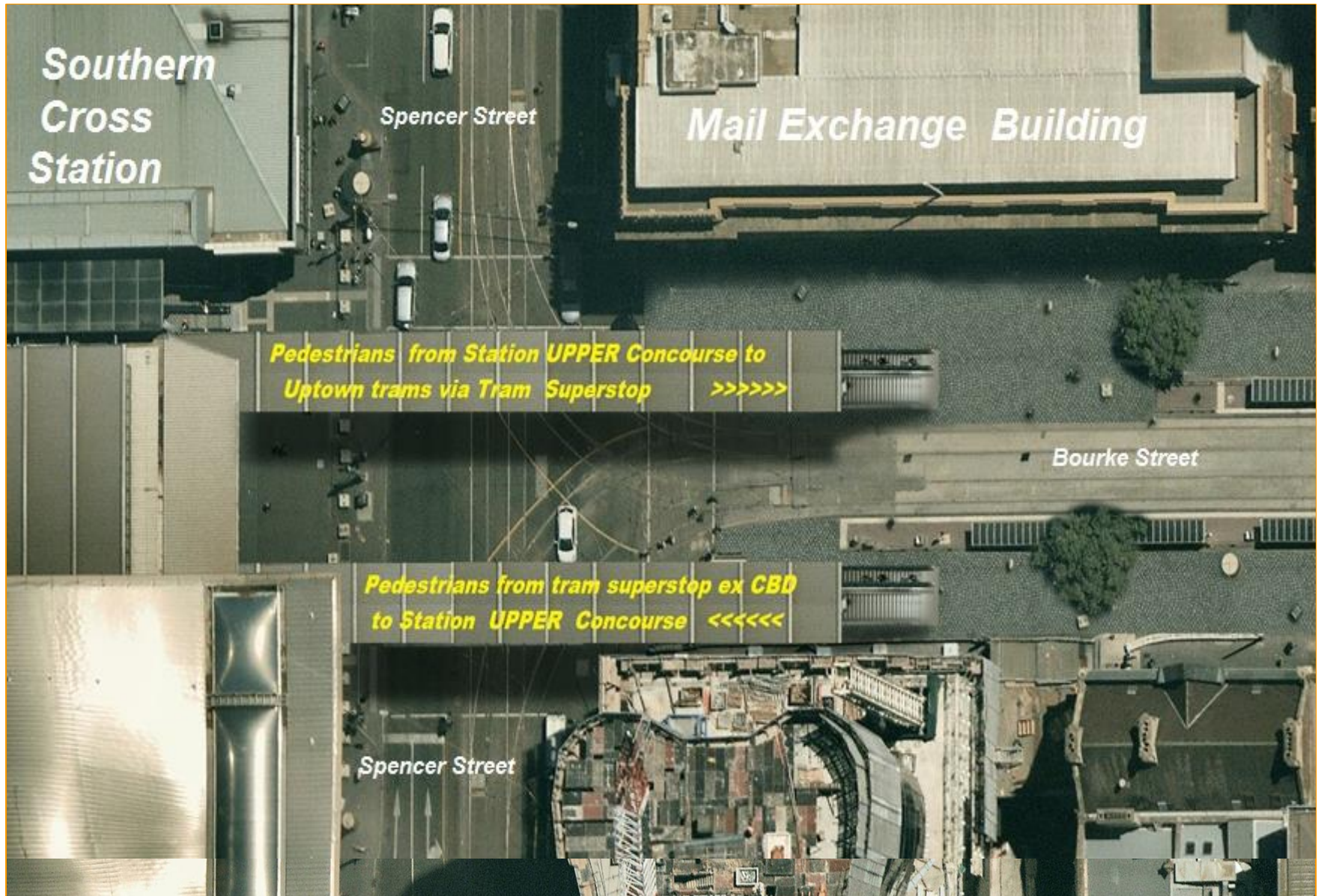
Improving Service Capacity

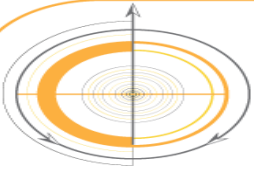
- **NEW HCMT 7 car trains on MM 1**
- **NEW X'Trapolis Mk 2 trains to cover network extensions and phase out Comeng trains**
- **Increased train stabling capacity**
- **New train maintenance facilities at Kananook and near Wyndham Vale**

Metro Train Types



Improving the Interchange Experience





Train / TRAM Interchange Points

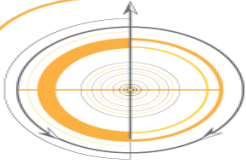
NOW (33)

- Armadale
- Balaclava
- Box Hill
- Camberwell
- Caulfield
- East Richmond
- Essendon
- Elsternwick
- Flagstaff
- Flinders Street
- Flemington Bridge
- Gardiner
- Glenferrie
- Footscray
- Glen Iris
- Glenhuntly
- Hawthorn
- Jolimont
- Kooyong
- Malvern
- Melb Central
- Moreland
- Newmarket
- Nth Melbourne
- Nth Richmond
- Parliament
- Richmond
- Riversdale
- Royal Park
- Sthn Cross
- South Yarra
- Toorak
- Windsor



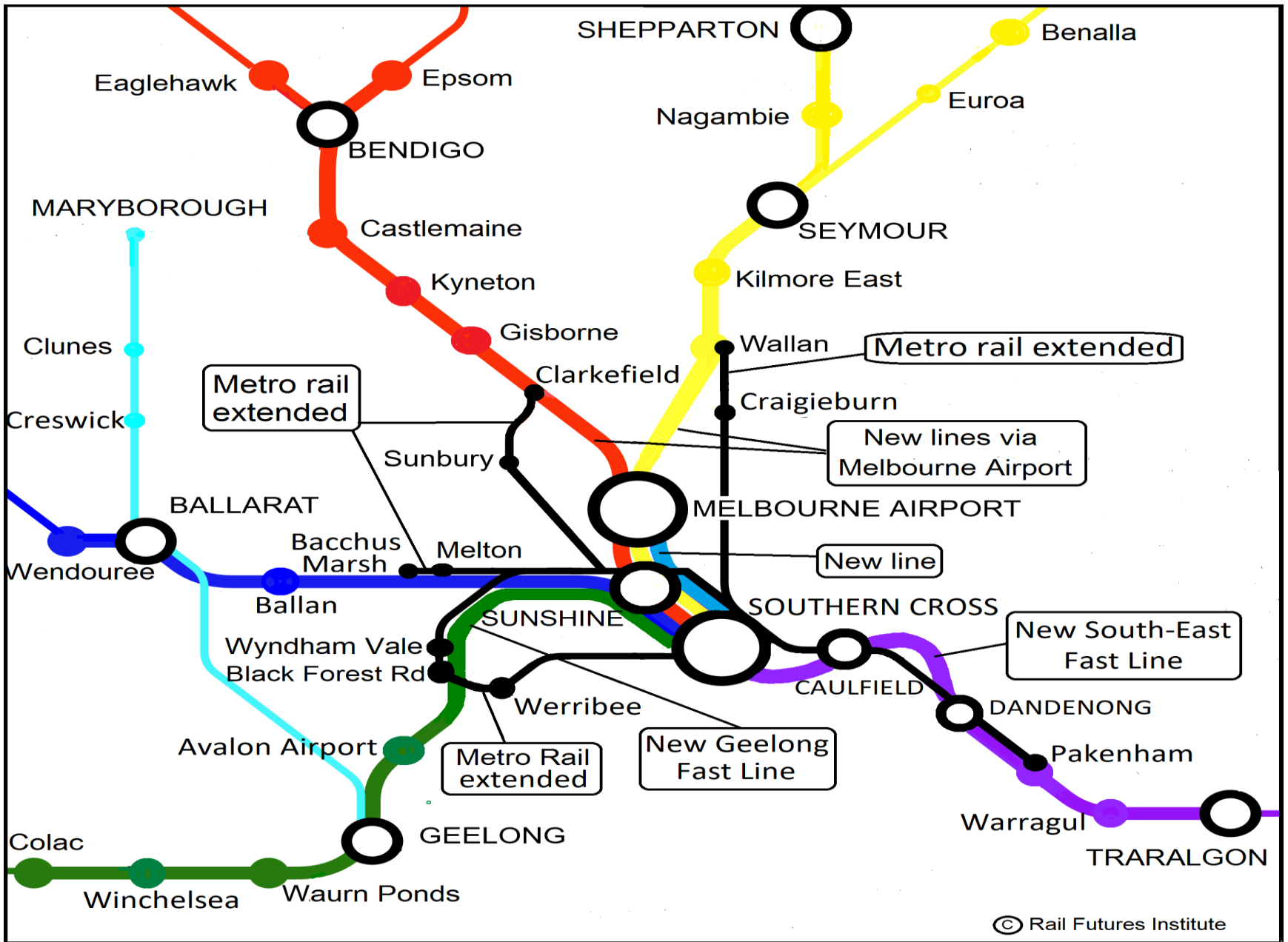
FUTURE (46)

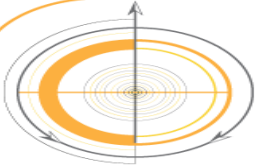
- Anzac
- Carnegie
- Chadstone
- Clifton Hill
- Darling
- East Malvern
- Fitzroy
- Fishermans Bend
- Melbourne Airport
- Moorabbin
- Parkville
- Reservoir
- West Melbourne



AirTrain – ***key features***

- A new airport railway from Southern Cross to Melbourne Airport via Sunshine - 15 minute travel time
- Fully segregated from busy suburban lines
- Tunnelled exit from Southern Cross and Airport
- New platforms for easy interchange at Sunshine Super-hub
- Uses existing rail corridors
- Dedicated airport line trains for air travellers
- Fast, frequent City - Airport shuttle service 24/ 7
- ***All V/Line and Metro stations have access to Airport - via Southern Cross or Sunshine Super-hub with maximum of one change of train***



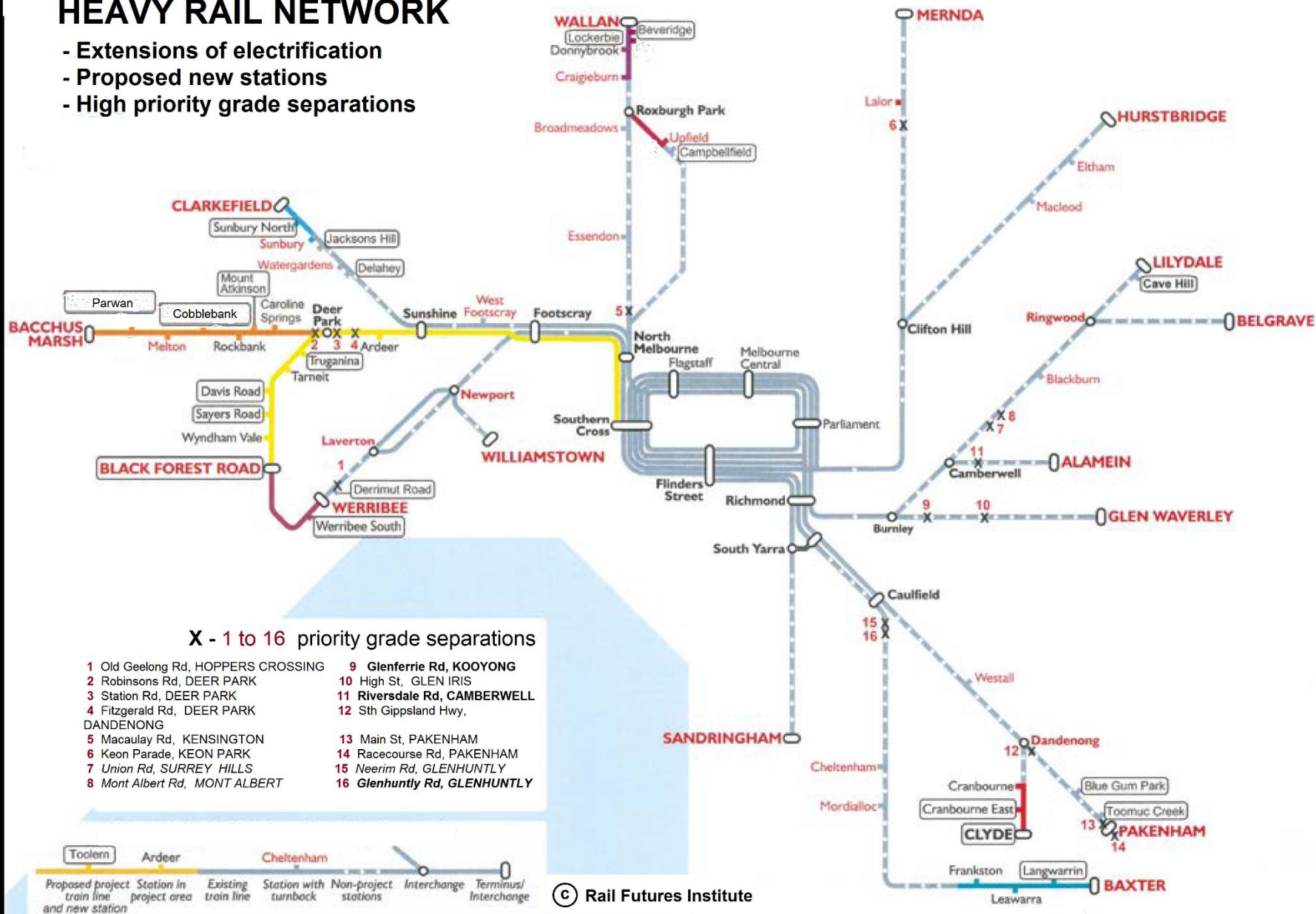


Extending the Electrified Metro Network

- **Southern Cross (platforms 15/16) via RRL to WYNDHAM VALE and BLACK FOREST ROAD**
- **Sunshine to MELTON**
- **Upfield to ROXBURGH PARK**
- **Cranbourne to CLYDE**
- **Frankston to BAXTER**
- **Craigieburn to WALLAN**

HEAVY RAIL NETWORK

- Extensions of electrification
- Proposed new stations
- High priority grade separations



> THE TRAIN PLAN



UNTANGLING THE CITY LOOP

- Simpler for travellers to use the network
- Consistent operation 24/7 on all CBD lines
- **Two new CROSS-CITY lines replace the Caulfield and Northern Loops adding significant inner core capacity:**
 - Craigieburn to Baxter (via Essendon and City Loop)
 - Craigieburn to Glen Waverley (via Upfield and Flinders St)
with cross-platform interchange at Richmond & West Melbne
- **Clifton Hill Loop as now – CLOCKWISE full time**
- **Burnley Loop as now – but ANTI CLOCKWISE full time**

> THE TRAIN PLAN



MOVING FORWARD FOR MELBOURNE @ 8 MILLION

- 20 new stations in outer growth areas
- Segregating Wyndham Vale and Geelong lines
- Segregating Melton and Ballarat lines
- Universal disabled access compliance
- Upgraded passenger amenity and safety at stations

BIG TICKET ITEMS

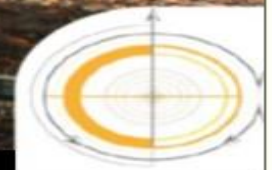
- MM 2 completion by 2032
- *South-East FASTline* by 2036
- Glen Waverley - Knox City extension by 2040

IMPROVING THE CUSTOMER TRAIN TRAVEL EXPERIENCE

Transport for Melbourne

T R A I N S

Friday August 9 - 2019



RAIL FUTURES
INSTITUTE INC.